

Fuji USER MANUAL



www.fujitools.com

CORNER PULSE WRENCHES

MODEL : FL-5SC-3



FL-5SC-3 BF N EC



FL-5SC-3 P



SPECIFICATIONS

「Scan code to download this document and see this tool on our online catalogue」

Model	Square Drive Size	Bolt Size	Recommended Torque Range	Rotational Frequency	Air Consumption (At Load)	Mass	Overall Length	Air Inlet Thread Size	Air Hose Size
	mm	mm	N·m	min ⁻¹	m ³ /min	kg	mm		mm
FL-5SC-3	9.5	M6~M8	10~22	6,600	0.33	1.18	238	Rc or NPT 1/4	6.3

The performance figures are at 0.63MPa (6.3bar).

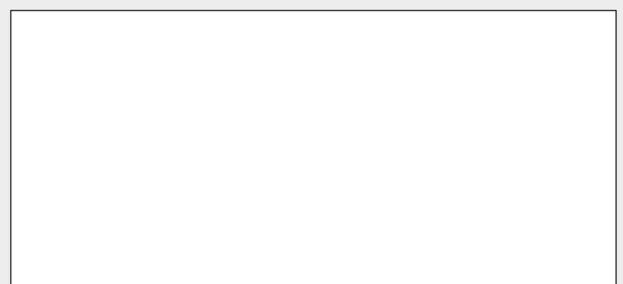
 Refer to "The Instructions and Warning for Safety Use" enclosed in each tool box.

Fuji Industrial Technique Co.,Ltd.

2-1-14, Kamiji, Higashinari-ku, Osaka, 537-0003 Japan

Tel : 81-6-6972-2335

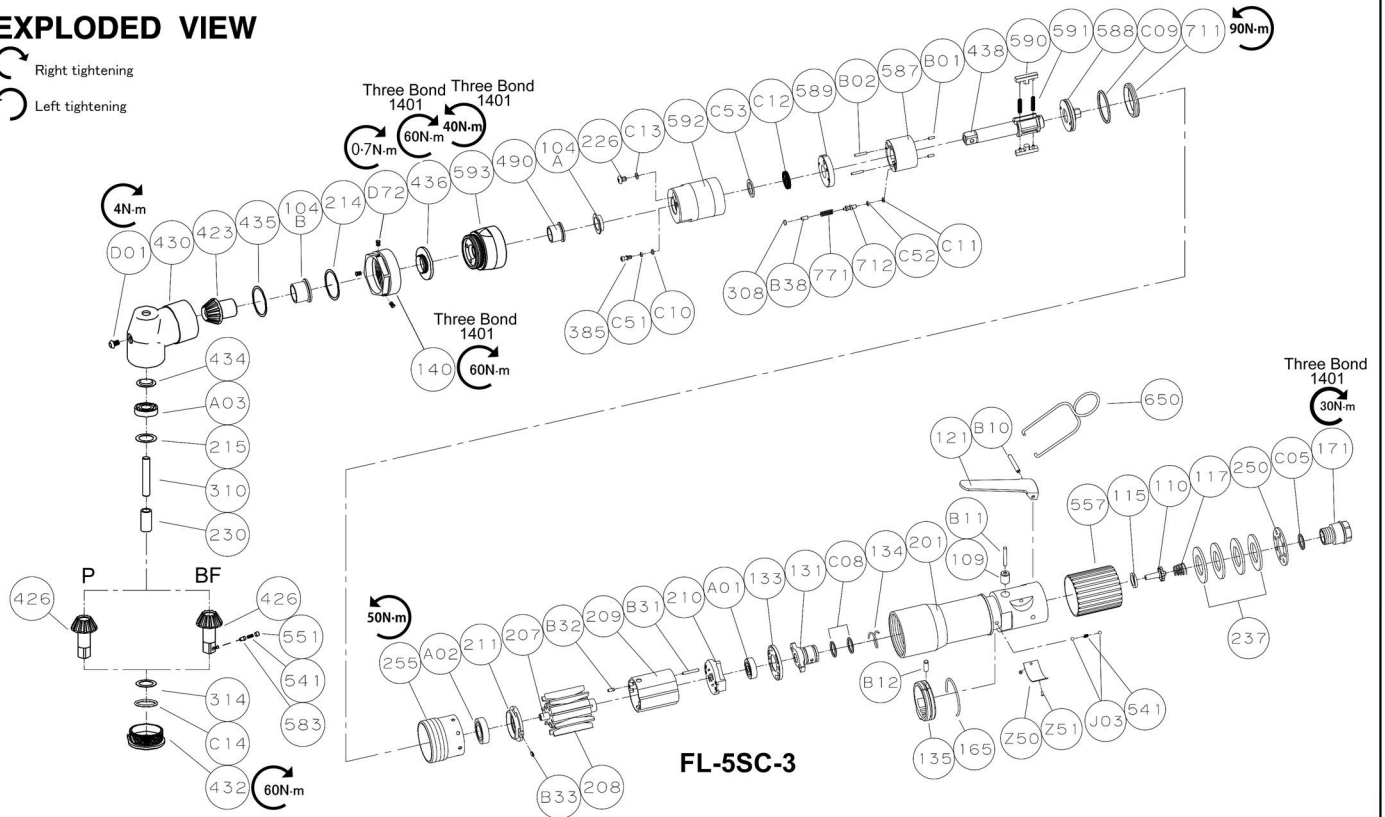
Fax : 81-6-6972-2380



MODEL : FL-5SC-3

EXPLODED VIEW

 Right tightening
 Left tightening



FL-5SC-3

PARTS LIST

Index No.	Fuji No.	Parts No.	Part Name	Qty
—	W-398006-00	5412076689	Housing Ass'y	
110	W-299110-00	5412057809	Throttle Valve	1
115	W-396115-00	5412104068	Throttle Valve Sheet	1
117	D-001117-00	5412051234	Throttle Valve Spring	1
121	M-073121-00	5412054786	Throttle Valve Lever	1
131	W-397131-00	5412076686	Reverse Valve	1
133	W-397133-00	5412076687	Reverse Valve Sheet	1
134	W-299134-00	5412057813	Reverse Valve Spring	1
135	W-216135-00	5412057086	Reverse Valve Lever	1
165	W-216165-00	5412057087	Stop Ring	1
171	W-394171-00	5412060669	Inlet Joint	1
201	W-398201-00	5412076691	Housing	1
(109)	W-397109-00	5412076685	Throttle Valve Bushing	1
237	W-394237-00	5412060653	Muffler Pad	4
250	W-394250-00	5412060654	Exhaust Cover	1
541	W-252541-00	5412057213	Button Retainer Spring	1
557	W-394557-00	5412060674	Protector	1
B10	SP-325	5412056285	Spring Pin	1
B11	NR-321.5FR	5412060670	Needle Roller	1
B12	NR-413.5	5412055137	Needle Roller	1
C05	O-S12.5	5412055220	"O"Ring	1
C08	O-S12.5	5412055220	"O"Ring	2
J03	B-3	5412050915	Ball	2
—	W-379021-04	5412105381	Oil Cylinder Ass'y	
104A	W-254104-00	5412057220	Bushing	1
226	W-184226-00	5412057024	Oil Plug	1
308	W-371308-00	5412058457	Spacer	1
385	W-379385-00	5412058606	Adjusting Screw	1
438	W-379438-00	5412058607	Spindle	1
587	W-379587-00	5412058610	Oil Cylinder	1
588	W-379588-00	5412058611	Oil Cylinder Upper Plate	1
589	W-379589-00	5412058612	Oil Cylinder Lower Plate	1
590	W-370590-00	5412058436	Spindle Blade	2
591	W-371591-00	5412058468	Blade Spring	2
592	W-379592-00	5412058613	Cylinder Case	1
711	W-371711-00	5412058476	Cylinder Cover	1
712	W-371712-00	5412058477	Damper	1
771	W-370771-00	5412058441	Spring	1
B01	NR-25.8F	5412055091	Needle Roller	2
B02	NR-211.8	5412055088	Needle Roller	2
B38	NR-36	5412055122	Needle Roller	1
C09	O-S27.5F(H)	5412055236	"O"Ring	1
C10	O-S2F(H)	5412055229	"O"Ring	1
C11	O-S1.4F(H)	5412055216	"O"Ring	1
C12	O-KX12(H)	5412055181	"X"Ring	1
C13	O-S3(H)	5412055242	"O"Ring	1
C51	BR-S2.5FT2	5412051083	Backup Ring	1
C52	BR-S2.5FT2	5412051083	Backup Ring	1
C53	BR-112B	5412105373	Backup Ring	1

■ Standard Accessories

AC No.	Parts No.	Description	Qty
F-701-1	5412052204	1.5mm Hex.Pin Wrench	1
IB-202N00	5412054475	Inlet Bushing (FL-5SC-3 BF N EC only)	1

Index No.	Fuji No.	Parts No.	Part Name	Qty
104B	W-337104-00	5412058235	Bushing	1
140	W-337140-00	5412058236	Cup Nut	1
207	W-370207-00	5412058429	Rotor	1
208	W-370208-00	5412058430	Rotor Blade	9
209	W-395209-00	5412060660	Cylinder	1
(B32)	SP-26	5412056272	Spring Pin	1
210	W-394210-00	5412060651	Cylinder Upper Plate	1
211	W-395211-00	5412060661	Cylinder Lower Plate	1
(B33)	SP-25	5412056271	Spring Pin	1
214	W-337214-00	5412058237	Adjusting Washer (Shim) (T=0.1)	1
	W-337214-01	5412058238	Adjusting Washer (Shim) (T=0.2)	1
	W-337214-02	5412058239	Adjusting Washer (Shim) (T=0.3)	1
215	W-337215-00	5412058240	Adjusting Washer (B) (T=0.1)	1
	W-337215-01	5412058241	Adjusting Washer (B) (T=0.2)	1
	W-337215-02	5412058242	Adjusting Washer (B) (T=0.5)	1
230	W-337230-00	5412058243	Bearing Spacer (B)	1
255	W-379255-00	5412058604	Motor Fastening Nut	1
310	W-337310-00	5412058244	Spindle Arbor	1
314	A-005314-01	5412050310	Wheel Spindle Washer	1
423	W-337423-00	5412058245	Bevel Pinion	1
430	W-337430-00	5412058248	No.1 Gear Case	1
432	W-337432-00	5412058249	Gear Case Cover	1
434	W-337434-00	5412058250	Bearing Washer	1
435	W-214435-00	5412057055	Thrust Washer	1
436	W-337436-00	5412058251	Bearing Holder	1
490	W-336490-00	5412058233	Spindle Bushing	1
593	W-403593-00	5412105560	Front Case	1
650	W-394650-00	5412060680	Hanger (Vertical)	1
A01	BB-EE2	5412050936	Ball Bearing	1
A02	BB-6901	5412051041	Ball Bearing	1
A03	BB-L1360	5412050945	Ball Bearing	1
B31	SP-216	5412056267	Spring Pin	1
C14	O-S12	5412055219	"O"Ring	1
D01	CS-45B	5412051161	Cap Screw	1
D72	SS-33K	5412075598	Set Screw	3
Z50	NP-1156	5412074851	Name Plate	1
Z51	NPN-0X3.2	5412055056	Rivet Screw	2
—	NP-0740	5412060277	Warning Label	1

FL-5SC-3 P

426	W-337426-00	5412058246	Bevel Gear(P)	1
-----	-------------	------------	---------------	---

FL-5SC-3 BF N EC

—	W-403081-00	5412105810	Bevel Gear Ass'y(BF)	
---	-------------	------------	----------------------	--

426	W-337426-01	5412058247	Bevel Gear(BF)	1
-----	-------------	------------	----------------	---

541	W-252541-00	5412057213	Button Retainer Spring	1
-----	-------------	------------	------------------------	---

551	W-252551-00	5412057216	Plug	1
-----	-------------	------------	------	---

583	W-252583-00	5412057217	Retainer Button (F)	1
-----	-------------	------------	---------------------	---

—	NP-0445	5412104436	CE Sticker	1
---	---------	------------	------------	---

—	W-379093-00	5412105795	Service Kit	
---	-------------	------------	-------------	--

INC # B01, B02, C09, C10, C11, C12, C13, C51, C52, C53, 208, 308, 591				
---	--	--	--	--

—	OIL-11-4L	5412105495	Oil (4l)	
---	-----------	------------	----------	--

□ Specify parts number and quantity when ordering.

□ The related parts are shown in a thick frame.

□ #201, #209 and #211 are supplied together with parts shown in ().