

Fuji USER MANUAL

— IMPACT WRENCHES & DRIVERS —

MODELS : FW-6SX-5, -6 & FW-6SXD-6, -60

ASSEMBLY TOOLS

ABRASIVE TOOLS

DRILLS / TAPPERS

PERCUSSIVE TOOLS

AIR MOTORS

OTHER PRODUCTS



FW-6SX-5, -6



FW-6SXD-6, -60

	FW-6SXD-6	FW-6SXD-60
	A : 9.5mm	A : 13mm
	B : 12mm	B : 16mm

SPECIFICATIONS

Model	Bolt Size	Recommended Torque Range			Max. Torque	Rotational Frequency	Square Drive Size		Bit Shank Size		Overall Length		Mass		Air Consumption (at Load)	
		mm	N.m	kgf.m			ft.lb	N.m	min ⁻¹	mm	in	mm	in	mm	in	mm
FW-6SX-5	M6	11~23	1.1~2.3	8.1~17.0	30	10,000	9.5	3/8	—	—	223	8 25/32	1.10	2.4	0.28	9.9
FW-6SX-6	M6	10~18	1.0~1.8	7.4~13.3	25	10,000	9.5	3/8	—	—	224	8 13/16	1.10	2.4	0.30	10.6
FW-6SXD-6	M6	10~18	1.0~1.8	7.4~13.3	25	10,000	—	—	6.35	1/4	235	9 1/4	1.10	2.4	0.30	10.6
FW-6SXD-60	M6	10~18	1.0~1.8	7.4~13.3	25	10,000	—	—	6.35	1/4	235	9 1/4	1.10	2.4	0.30	10.6

*Air Inlet Thread Size: PT or NPT 1/4" (FW-6SX-5 PT1/4" only).

*Air Hose Size: 9.5mm (3/8").

The performance figures are at 0.63MPa (6.3bar).



Refer to "The Instructions and Warning for Safety Use" enclosed in each tool box.

Fuji Industrial Technique Co., Ltd.

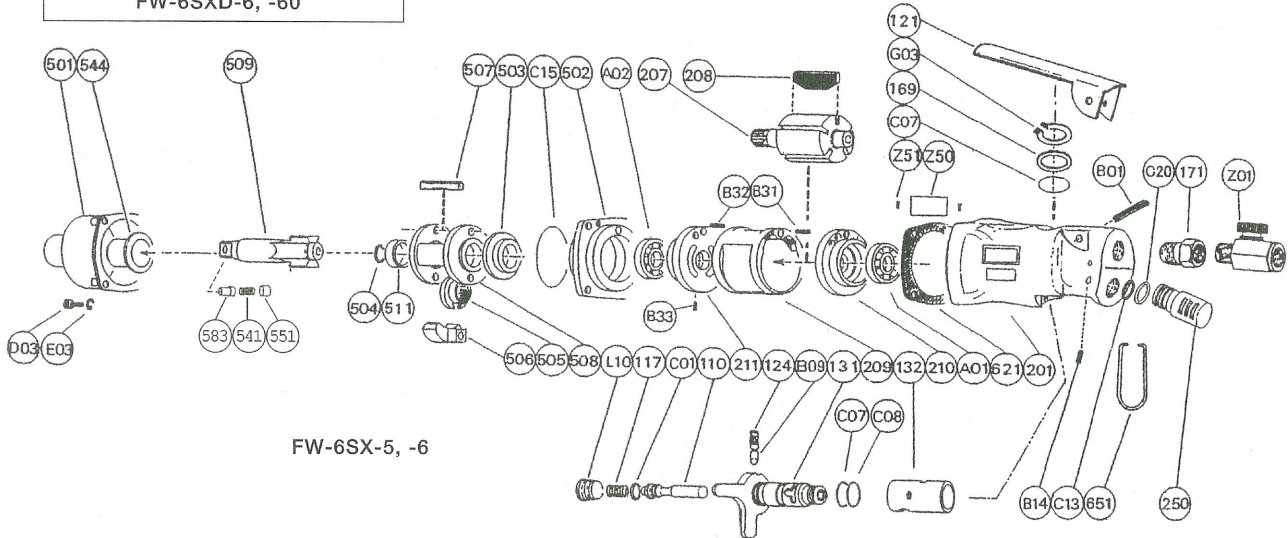
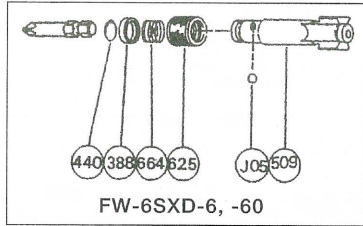
2-1-14, Kamiji, Higashinari-ku, Osaka, 537-0003 Japan

Tel : 81-6-6972-2335

Fax : 81-6-6972-2380

MODELS : FW-6SX-5, -6 & FW-6SXD-6,-60

EXPLODED VIEW



PARTS LIST

Index No.	Parts No.	Parts Name	Qt.	Index No.	Parts No.	Parts Name	Qt.	Index No.	Parts No.	Parts Name	Qt.												
FW-6SX-5				FW-6SX-5				It is common with FW-6SX-5 excluding the undermentioned parts.															
-	W-175006-01	Housing Ass'y		-	W-176013-00	Clutch Housing Ass'y		FW-6SX-6															
110	W-029110-A	Throttle Valve	1	501	W-176501-00	Clutch Housing	1	505	W-176505-00	Cam	1												
117	W-002117-00	Throttle Valve Spring	1	544	W-025544-00	Clutch Housing Bushing	1	506	W-176506-03	Hammer Clutch	2												
121	W-175121-00	Throttle Valve Lever	1	207	W-172207-00	Rotor	1	507	W-025507-00	Clutch Pin	1												
124	G-005124-00	Knock Spring	1	208	W-025208-00	Rotor Blade	6	508	W-025508-A	Clutch Frame	1												
131	W-002131-00	Reverse Valve	1	209	W-025209-00	Cylinder	1	509	W-176509-05	Anvil	1												
169	W-002169-00	Reverse Valve Washer	1	210	W-025210-00	Cylinder Upper Plate	1	(541)	W-252541-00	Button Retainer Spring (F)	1												
171	IB-3020S0	Inlet Bushing	1	211	W-175211-00	Cylinder Lower Plate	1	(551)	W-252551-00	Plug	1												
201	W-175201-01	Housing	1	250	W-252250-00	Exhaust Cover	1	(583)	W-252583-00	Retainer Button (F)	1												
(132)	W-002132-00	Reverse Valve Bushing	1	502	W-175502-00	Clutch Housing Cover	1	Z01	W-17	Regulator <PT>	1												
B01	SP-325	Spring Pin	1	503	W-025503-00	Spacer (B)	1	W-17N	Regulator <NPT>	1													
B09	NR-35FR	Needle Roller	1	504	W-025504-00	Spacer (C)	1	FW-6SXD-6, -60															
C01	O-P3	"O" Ring	1	505	W-172505-00	Cam	1	388	W-305388-00	Spring Holder	1												
C07	O-P10	"O" Ring	2	506	W-176506-03	Hammer Clutch	1	440	W-305440-00	Ring	1												
C08	O-S10	"O" Ring	1	507	W-025507-00	Clutch Pin	1	505	W-176505-00	Cam	1												
G03	SR-S9	Snap Ring	1	508	W-025508-A	Clutch Frame	1	506	W-176506-03	Hammer Clutch	2												
L10	PL-1/8	Plug	1	509	W-176509-05	Anvil	1	507	W-025507-00	Clutch Pin	2												
FW-6SX-6, -6SXD-6, -60				(541)	W-252541-00	Button Retainer Spring (F)	1	508	W-026508-02	Clutch Frame	1												
-	W-175006-01	Housing Ass'y <PT>		(551)	W-252551-00	Plug	1	509	W-176509-07	Anvil <For FW-6SXD-6>	1												
-	W-175006-02	Housing Ass'y <NPT>		583	W-252583-00	Retainer Button (F)	1	W-176509-08	Anvil <For FW-6SXD-60>	1													
110	W-029110-A	Throttle Valve	1	511	W-025511-00	Clutch Frame Bushing	1	625	W-305625-00	Bit Cover	1												
117	W-002117-00	Throttle Valve Spring	1	621	W-175621-00	Packing (A)	1	664	W-305664-00	Finder Spring	1												
121	W-175121-00	Throttle Valve Lever	1	651	W-070651-00	Hanger (HORIZONTAL)	1	J05	B-3	Steel Ball	1												
124	G-005124-00	Knock Spring	1	A01	BB-EE3	Ball Bearing	1	Z01	W-17	Regulator <PT>	1												
131	W-002131-00	Reverse Valve	1	A02	BB-EE3	Ball Bearing	1	W-17N	Regulator <NPT>	1													
169	W-002169-00	Reverse Valve Washer	1	B14	SP-325	Spring Pin	1	Z50	NP-1030	Name Plate	1												
171	IB-3020S0	Inlet Bushing <PT>	1	B31	SP-2.58	Spring Pin	1	Z51	NPN-0X3.2	Screw Rivet	2												
	IB-302NS0	Inlet Bushing <NPT>	1	B32	SP-2.58	Spring Pin	1	<table border="1"> <tr> <td colspan="3">Standard Accessory</td> </tr> <tr> <th>AC No.</th> <th>Description</th> <th>Qt.</th> </tr> <tr> <td colspan="3">FW-6SXD-6</td> </tr> <tr> <td>PB-23</td> <td>75mm Driver Bit</td> <td>1</td> </tr> </table>				Standard Accessory			AC No.	Description	Qt.	FW-6SXD-6			PB-23	75mm Driver Bit	1
Standard Accessory																							
AC No.	Description	Qt.																					
FW-6SXD-6																							
PB-23	75mm Driver Bit	1																					
201	W-175201-01	Housing	1	B33	SP-1.56	Spring Pin	1																
(132)	W-002132-00	Reverse Valve Bushing	1	C13	O-S14	"O" Ring	1																
B01	SP-325	Spring Pin	1	C15	O-S38	"O" Ring	1																
B09	NR-35FR	Needle Roller	1	C20	O-S15	"O" Ring	1																
C01	O-P3	"O" Ring	1	D03	CS-525	Cap Screw	4																
C07	O-P10	"O" Ring	2	E03	SW-5	Spring Washer	4																
C08	O-S10	"O" Ring	1	Z01	W-17	Regulator	1																
G03	SR-S9	Snap Ring	1	Z50	NP-1028	Name Plate	1																
L10	PL-1/8	Plug	1	Z51	NPN-0X3.2	Screw Rivet	2																

- The related parts are shown in the thick frame.
- #201 and 509 are supplied together with parts shown in ().
- Specify parts number and quantity in ordering.