

# Fuji USER MANUAL

## DRILLS

MODELS : FRD-6PH-2, -3



FRD-6PH-2. -3

### SPECIFICATIONS

MODEL	Spindle Type		Drill Chuck	Chuck Capacity	Max. Output	Stall Torque	Rotational Frequency	Max. Air Consumption	Distance from Center to Side	Overall Length	Mass	Air Inlet Thread Size	Air Hose Size	
	Type													mm
FRD-6PH-2	—	Taper	J.T.No.1	DCK-6.5J	6.5	0.34	2.7	4,300	0.59	21.0	198	0.9	Rc or NPT 1/4	9.5
	TH	Thread	3/8-24UNF	DCK-6.5	6.5	0.34	2.7	4,300	0.59	21.0	202	0.9	Rc or NPT 1/4	9.5
	TH W/O C	Thread	3/8-24UNF	—	—	0.34	2.7	4,300	0.59	21.0	164	0.75	Rc or NPT 1/4	9.5
FRD-6PH-3	—	Taper	J.T.No.1	DCK-6.5J	6.5	0.34	4.3	2,800	0.59	21.0	198	0.9	Rc or NPT 1/4	9.5
	8	Taper	J.T.No.1	DCK-8J	8.0	0.34	4.3	2,800	0.59	21.0	205	0.9	Rc or NPT 1/4	9.5
	TH	Thread	3/8-24UNF	DCK-6.5	6.5	0.34	4.3	2,800	0.59	21.0	202	0.9	Rc or NPT 1/4	9.5
	8 TH	Thread	3/8-24UNF	DCK-8	8.0	0.34	4.3	2,800	0.59	21.0	204	0.9	Rc or NPT 1/4	9.5
	TH W/O C	Thread	3/8-24UNF	—	—	0.34	4.3	2,800	0.59	21.0	164	0.75	Rc or NPT 1/4	9.5

\* Standard type is Taper Spindle type. Please specify Spindle type when ordering.

\* Please specify if you need a Drill Chuck or not when ordering Thread Spindle type.

The performance figures are at 0.63 Mpa (6.3bar).

Refer to "The Instructions and Warning for Safety Use" enclosed in each tool box.

Fuji Industrial Technique Co.,Ltd.

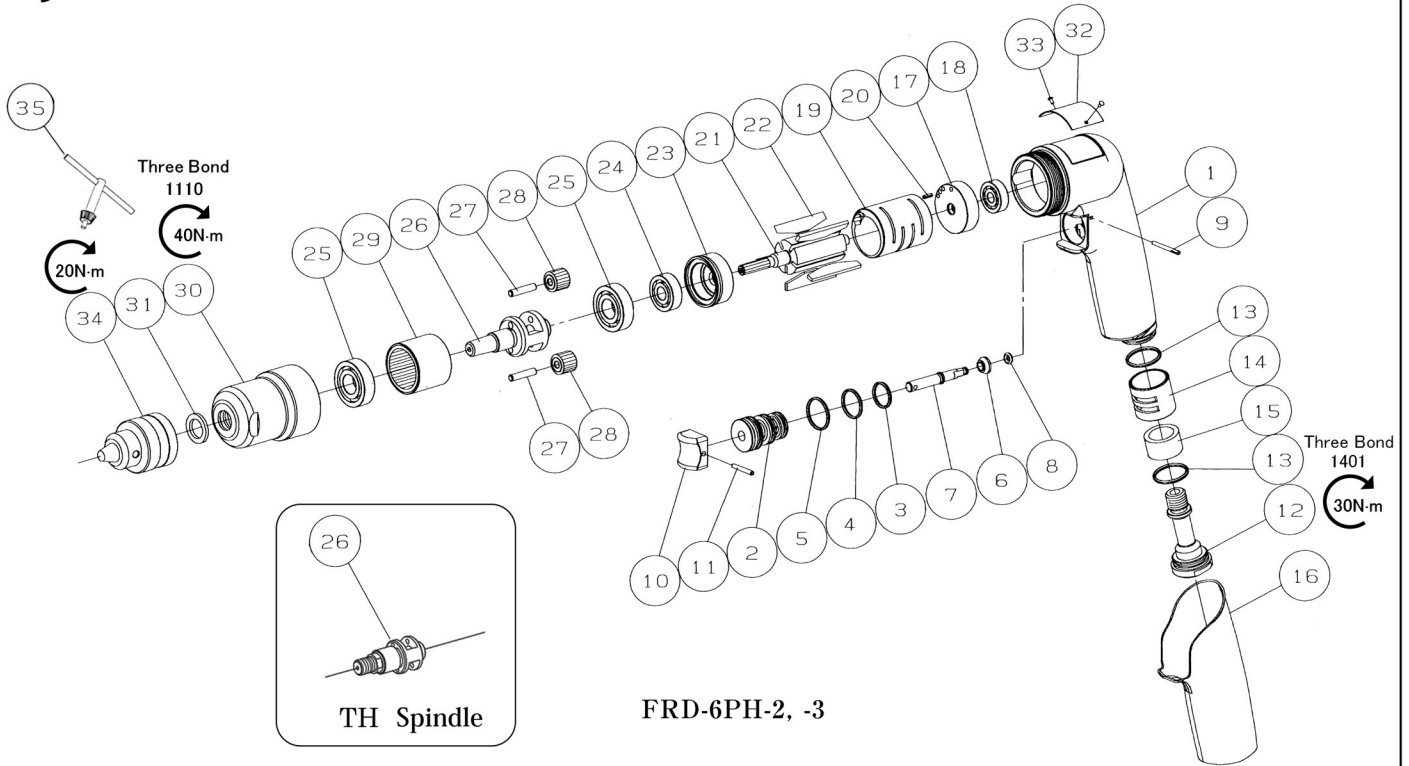
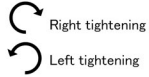
2-1-14, Kamiji, Higashinari-ku, Osaka, 537-0003 Japan

Tel : 81-6-6972-2335

Fax : 81-6-6972-2380

# MODELS : FRD-6PH-2, -3

## EXPLODED VIEW



FRD-6PH-2, -3

## PARTS LIST

Index No.	Parts No.	Parts Name	Qty	Index No.	Parts No.	Parts Name	Qty	Index No.	Parts No.	Parts Name	Qty
<b>FRD-6PH-2, -3</b>				<b>FRD-6PH-2</b>				<b>FRD-6PH-3</b>			
—	D-176006-00	Housing Ass'y		—	D-176027-03	Spindle Ass'y (Taper Spindle)		—	D-176027-00	Spindle Ass'y (Taper Spindle)	
1	D-176201-00	Housing	1	—	D-176027-04	Spindle Ass'y (TH spindle)		—	D-176027-05	Spindle Ass'y (TH spindle)	
2	D-176109-00	Throttle Valve Bushing	1	25	BB-6001	Ball Bearing	2	25	BB-6001	Ball Bearing	2
3	O-S12	"O" Ring	1	26	D-176438-03	Spindle (Taper)	1	26	D-176438-00	Spindle (Taper)	1
4	O-S14	"O" Ring	1		D-176438-04	Spindle (TH)	1		D-176438-05	Spindle (TH)	1
5	O-S16	"O" Ring	1	27	NR-319.8	Needle Roller	2	27	NR-419	Needle Roller	2
6	D-176110-00	Throttle Valve	1	28	D-176413-02	No.1 Planet Gear	2	28	D-176413-00	No.1 Planet Gear	2
7	D-176113-00	Throttle Valve Rod	1	29	D-176417-03	No.1 Internal Gear	1	29	D-176417-00	No.1 Internal Gear	1
8	O-P3	"O" Ring	1	17	D-176210-00	Cylinder Upper Plate	1	17	D-176210-00	Cylinder Upper Plate	1
9	GP-224GLC	Grooved Pin	1	18	BB-626	Ball Bearing	1	18	BB-626	Ball Bearing	1
10	W-125121-00	Throttle Valve Lever	1	19	D-176209-00	Cylinder	1	19	D-176209-00	Cylinder	1
11	SP-2518	Spring Pin	1	(20)	SP-26	Spring Pin	1	(20)	SP-26	Spring Pin	1
12	W-371171-00	Inlet Joint	1	21	D-176207-02	Rotor	1	21	D-176207-00	Rotor	1
13	O-S18	"O" Ring	2	22	W-100208-00	Rotor Blade	5	22	W-100208-00	Rotor Blade	5
14	W-302250-00	Exhaust Cover	1	23	D-176211-00	Cylinder Lower Plate	1	23	D-176211-00	Cylinder Lower Plate	1
15	D-176237-00	Muffler Pad	1	24	BB-608	Ball Bearing	1	24	BB-608	Ball Bearing	1
16	D-176557-00	Protector	1	30	D-176430-00	No.1 Gear Case	1	30	D-176430-00	No.1 Gear Case	1
				(31)	D-014222-00	Felt Ring	1	(31)	D-014222-00	Felt Ring	1
				32	NP-0022	Name Plate	1	32	NP-0021	Name Plate	1
				33	NPN-0X3.2	Screw Rivet	2	33	NPN-0X3.2	Screw Rivet	2
				34	DCK-6.5J	Drill Chuck (for Taper Spindle)	1	<b>Drill Chuck (6)</b>			
					DCK-6.5	Drill Chuck (for TH Spindle)	1	34	DCK-6.5J	Drill Chuck (for Taper Spindle)	1
				(35)	DCK-6.5H	Chuck Handle	1		DCK-6.5	Drill Chuck (for TH Spindle)	1
								(35)	DCK-6.5H	Chuck Handle	1
								<b>Drill Chuck (8)</b>			
								34	DCK-8J	Drill Chuck (for Taper Spindle)	1
								(35)	DCK-10H	Chuck Handle	1
								34	DCK-8	Drill Chuck (for TH Spindle)	1
								(35)	DCK-6.5H	Chuck Handle	1

■ Standard Accessory

AC No.	Description	Qty
IB-202N00	Inlet Bushing (for NPT only)	1

- The related parts are shown in thick frame.
- #19, #30, and #34 are supplied together with parts shown in ( ).
- Specify parts number and quantity when ordering.