

Fuji USER MANUAL

DIE GRINDERS

MODELS : FG-13-1F, -2, -10F, -20



FG-13-1F



FG-13-2



FG-13-10F



FG-13-20

SPECIFICATIONS

Model	Collet Size		Capacity				Rotational Frequency	Overall Length		Mass		Max. Air Consumption		Air Inlet Thread Size	Air Hose Size	
			Grinding Wheel		Burr Head											
	mm	in	mm	in	mm	in	min ⁻¹	mm	in	kg	lb	m ³ /min	ft ³ /min	mm	in	
FG-13-1F	3	1/8	13	1/2	10	3/8	30,000	158	6 7/32	0.38	0.84	0.25	8.8	PT or NPT 1/4	6.3	1/4
FG-13-2	3	1/8	13	1/2	10	3/8	30,000	150	5 29/32	0.44	0.97	0.25	8.8	PT or NPT 1/4	6.3	1/4
FG-13-10F	3	1/8	13	1/2	10	3/8	30,000	158	6 7/32	0.36	0.79	0.25	8.8	PT or NPT 1/4	6.3	1/4
FG-13-20	3	1/8	13	1/2	10	3/8	30,000	150	5 29/32	0.43	0.95	0.25	8.8	PT or NPT 1/4	6.3	1/4

The performance figures are at 0.63MPa (6.3bar).

Refer to "The Instructions and Warning for Safety Use" enclosed in each tool box.

Fuji Industrial Technique Co., Ltd.

2-1-14, Kamiji, Higashinari-ku, Osaka, 537-0003 Japan

Tel : 81-6-6972-2335

Fax : 81-6-6972-2380

ASSEMBLY TOOLS

ABRASIVE TOOLS

DRILLS / TAPPERS

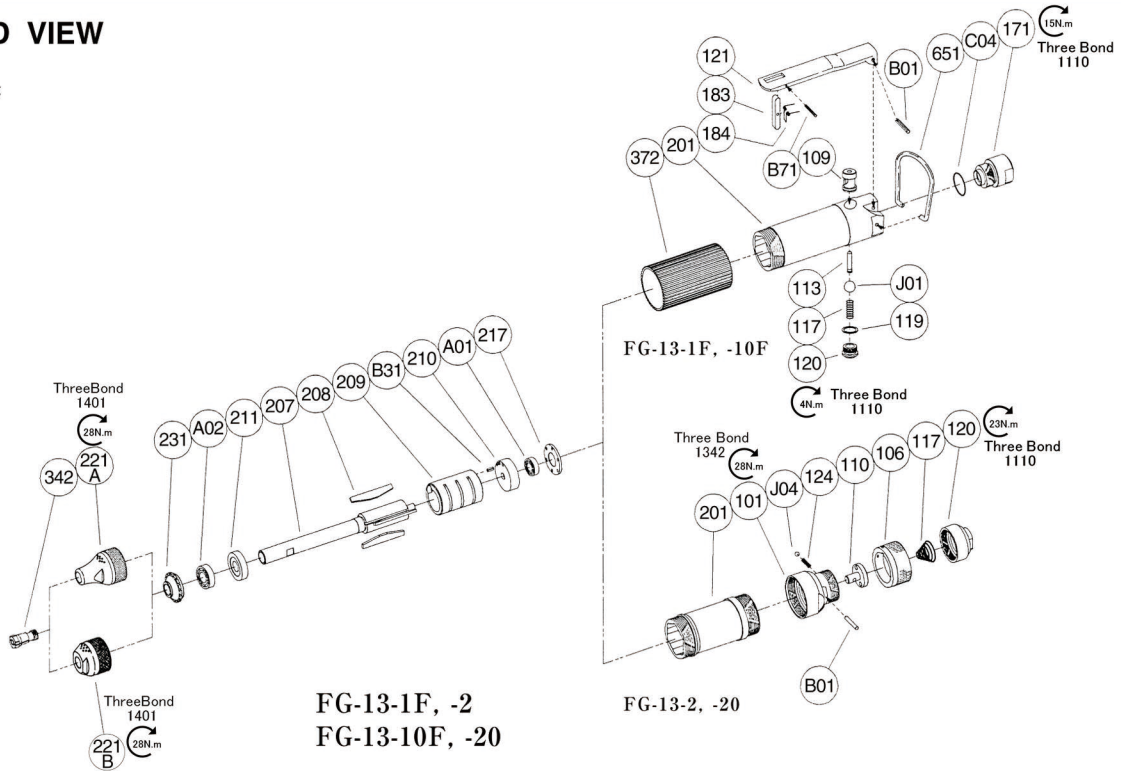
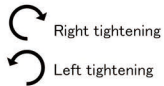
PERCUSSIVE TOOLS

AIR MOTORS

OTHER PRODUCTS

MODELS : FG-13-1F, -2, -10F, -20

EXPLODED VIEW



FG-13-1F, -2
FG-13-10F, -20

FG-13-1F, -10F

FG-13-2, -20

PARTS LIST

Index No.	Parts No.	Parts Name	Qty
FG-13-1F, -10F			
—	G-185006-01	Housing Ass'y (PT)	
—	G-185006-03	Housing Ass'y (NPT)	
201	G-185006-50	Housing	1
(109)	G-144109-00	Throttle Valve Bushing	1
113	G-144113-00	Throttle Valve Rod	1
117	G-029117-00	Throttle Valve Spring	1
119	D-021119-00	T.V. Cover Packing	1
120	D-021120-00	Throttle Valve Cover	1
171	G-185171-00	Inlet Bushing (PT)	1
	G-185171-01	Inlet Bushing (NPT)	1
B01	SP-320	Spring Pin	1
C04	O-S14	"O" Ring	1
J01	B-5/16U	Urethane Ball	1
Lock Lever Ass'y			
121	G-144121-02	Throttle Valve Lever	1
183	G-144183-02	Lock Key	1
184	G-144184-00	Lock Spring	1
B71	SP-218	Spring Pin	1
207	G-185207-00	Rotor	1
208	G-033208-00	Rotor Blade	3
209	G-003209-00	Cylinder	1
(B31)	SP-1.56	Spring Pin	1
210	G-185210-00	Cylinder Upper Plate	1
211	G-185211-00	Cylinder Lower Plate	1
217	G-105217-00	Bearing Cover	1
221A	G-185221-00	Spindle Bearing Cover (for FG-13-1F)	1
221B	G-185221-01	Spindle Bearing Cover (for FG-13-10F)	1
231	G-185231-00	Silencer Plate	1
342	G-185342-00	Collet (3mm)	1
	G-185342-01	Collet (1/8")	1
372	G-185372-00	Plastic Cover	1
651	W-070651-00	Hanger	1
A01	BB-624	Ball Bearing	1
A02	BB-EE3MN	Ball Bearing	1

Index No.	Parts No.	Parts Name	Qty
FG-13-2, -20			
—	G-186001-00	Housing Cover Ass'y (PT)	
—	G-186001-01	Housing Cover Ass'y (NPT)	
101	G-186101-00	Housing Cover	1
106	G-005106-01	Throttle Valve Handle	1
110	G-005110-00	Throttle Valve	1
117	G-042117-00	Throttle Valve Spring	1
120	G-005120-00	Throttle Valve Cover (PT)	1
	G-005120-01	Throttle Valve Cover (NPT)	1
124	G-005124-00	Knock Spring	1
B01	NR-316.8	Needle Roller	1
J04	B-3	Ball	1
201	G-186201-00	Housing	1
207	G-185207-00	Rotor	1
208	G-033208-00	Rotor Blade	3
209	G-003209-00	Cylinder	1
(B31)	SP-1.56	Spring Pin	1
210	G-185210-00	Cylinder Upper Plate	1
211	G-185211-00	Cylinder Lower Plate	1
217	G-105217-00	Bearing Cover	1
221A	G-185221-00	Spindle Bearing Cover (for FG-13-2)	1
221B	G-185221-01	Spindle Bearing Cover (for FG-13-20)	1
231	G-185231-00	Silencer Plate	1
342	G-185342-00	Collet (3mm)	1
	G-185342-01	Collet (1/8")	1
A01	BB-624	Ball Bearing	1
A02	BB-EE3MN	Ball Bearing	1

- The related parts are shown in a thick frame.
- #201 and 209 are supplied together with parts shown in ().
- Specify parts number and quantity when ordering.

Standard Accessories

AC No.	Description	Qty
F-101	8mm Open-End Wrench	1
F-301	8mm Hex. Wrench	1