

Fuji USER MANUAL

— BABY ANGLE DRILLS — MODEL : FCD-6A-1




FCD-6A-1

SPECIFICATIONS

Model	Drilling Capacity (Guidance)		Stall Torque (about)			Free Speed (about)	Size of Spindle Tapped Part	Side to Center (about)		Overall Length (about)		Weight (about)		Air Consumption at Max. Output (about)		Air Hose Size	
	mm	in	N·m	kgf·cm	ft·lbs	rpm	in	mm	in	mm	in	kg	lb	m ³ /min	ft ³ /min	mm	in
FCD-6A-1	6	1/4	2.5	25	1.8	2,500	1/4-28 Female	9.5	3/8	222	8 47/64	0.6	1.3	0.28	9.8	6.3	1/4

1/4" air inlet thread size. 6.3mm(1/4") air hose size.

The performance figures are at 0.63MPa (6.3bar).

 Refer to "The Instructions and Warning for Safety Use" enclosed in each tool box.

Fuji Industrial Technique Co.,Ltd.

2-1-14, Kamiji, Higashinari-ku, Osaka, 537-0003 Japan

Tel : 81-6-6972-2335

Fax : 81-6-6972-2380

ASSEMBLY TOOLS

ABRASIVE TOOLS

DRILLS / TAPPERS

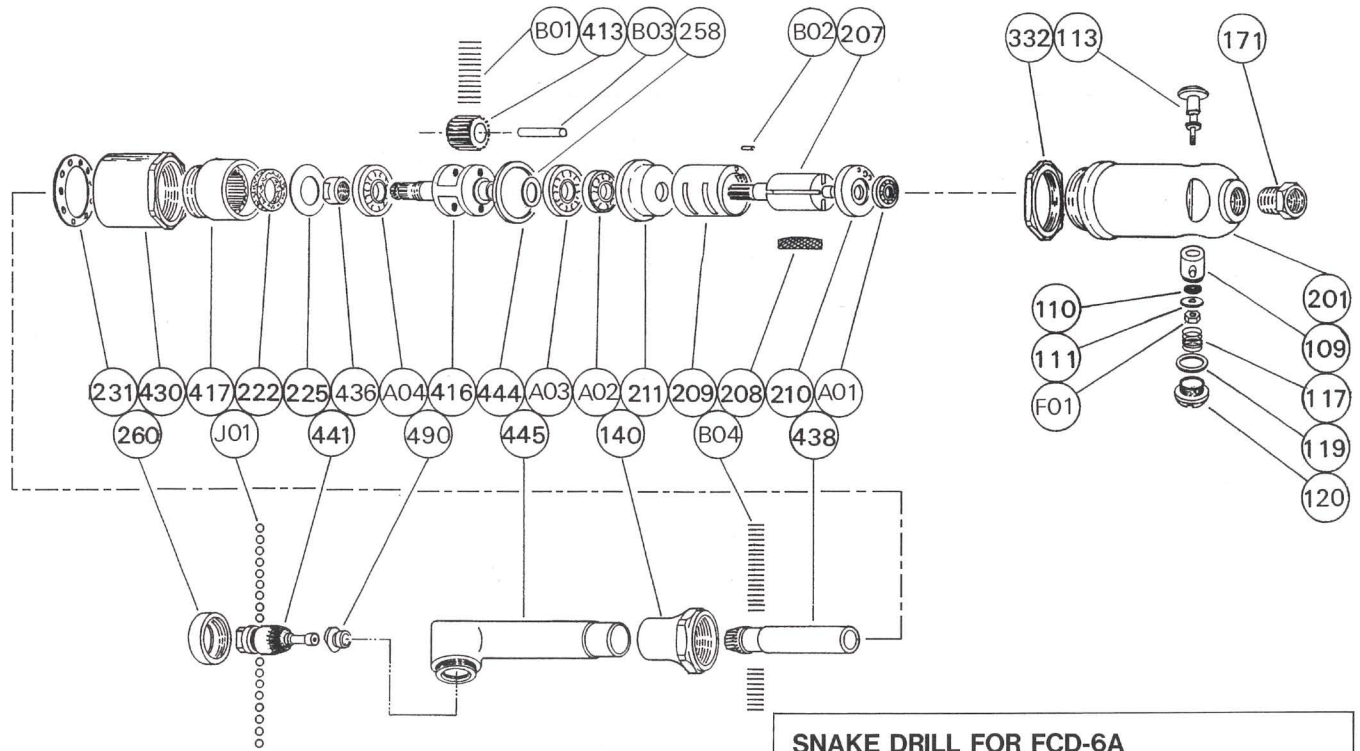
PERCUSSIVE TOOLS

AIR MOTORS

OTHER PRODUCTS

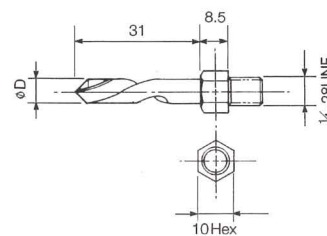
MODEL : FCD-6A-1

EXPLODED VIEW



FCD-6A-1

SNAKE DRILL FOR FCD-6A



AC No.	Size
	D mm
SN-2	2
SN-3	3
SN-4	4
SN-5	5
SN-6	6

PARTS LIST

Index No.	Parts No.	Parts Name	Qt.
CP No.	D-022006-00	Housing CP	
201	D-022201-00	Housing	1
109	D-022109-00	Throttle Valve Bushing	1
110	D-021110-00	Throttle Valve	1
111	D-021111-00	Throttle Valve Washer	1
113	D-022113-00	Throttle Valve Rod	1
117	D-021117-00	Throttle Valve Spring	1
119	D-021119-00	T.V. Cover Packing	1
120	D-021120-00	Throttle Valve Cover	1
171	IB-202000	Inlet Bushing (PT)	1
171	IB-202N00	Inlet Bushing (NPT)	1
F01	N-2	Nut	1
140	D-021140-00	Cup Nut	1
207	D-021207-00	Rotor	1
208	D-021208-00	Rotor Blade	4
209	D-021209-00	Cylinder	1
210	D-021210-00	Cylinder Upper Plate	1
211	D-021211-00	Cylinder Lower Plate	1
222	D-021222-00	Felt Ring	1
225	D-021225-00	Packing Washer	1
231	D-021231-00	Silencer Plate	1
258	D-058258-00	Washer (B)	1

Index No.	Parts No.	Parts Name	Qt.
260	D-022260-00	Bearing Case	1
332	D-022332-00	Lock Nut	1
413	D-021413-00	No.1 Planet Gear	2
(B01)	NR-19.5	Needle Roller	24
416	D-021416-00	No.1 Planet Gear Frame	1
417	D-021417-00	No.1 Internal Gear	1
430	D-022430-00	No.1 Gear Case	1
436	D-021436-00	Bearing Holder	1
438	D-021438-00	Spindle	1
441	D-022441-00	Spindle (B)	1
444	D-021444-00	Internal Gear Washer	1
445	D-022445-00	Spindle Case	1
490	D-021490-00	Spindle Bushing	1
A01	BB-634	Ball Bearing	1
A02	BB-626	Ball Bearing	1
A03	BB-EE3	Ball Bearing	1
A04	BB-EE3	Ball Bearing	1
B02	SP-26	Spring Pin	1
B03	NR-316.8	Needle Roller	2
B04	NR-1.29	Needle Roller	25
J01	B-2	Ball	17

Standard Accessories

AC No.	Description	Qty
F-102	9.5mm Open-End Wrench	1
SN-6	6mm Snake Drill	1

- CP No. denotes the assembled parts comprising of more than 1 pc. of parts.
The related parts are shown in the thick frame.
- #413 is supplied together with parts shown in ().
- Specify parts number and quantity in ordering.