

# Fuji USER MANUAL

## CORNER DRILLS

### MODELS : FCD-23R-11, -11S, -12, -12S



FCD-23R-11, -11S, -12, -12S

### SPECIFICATIONS

Model	Capacity (Guidance)		Socket M.T.#	Stall Torque N·m	Free speed min <sup>-1</sup>	Max. Air Consumption m <sup>3</sup> /min	Side to Center mm	Feed Length mm	Overall Length mm	Mass kg	Air Inlet Thread Size	Air Hose Size mm
	Drilling mm	Reaming Tapping mm										
	FCD-23R-11	22										
FCD-23R-11S	22	19	2	80.4	430	1.5	27	35	473	7.0	Rc or NPT 1/2	12.7
FCD-23R-12	22	19	3	80.4	430	1.5	27	35	473	7.1	Rc or NPT 1/2	12.7
FCD-23R-12S	22	19	3	80.4	430	1.5	27	35	473	7.1	Rc or NPT 1/2	12.7

\*FCD-23R-11S,-12S are Self Return Handle type.

The performance figures are at 0.63MPa (6.3bar).

 Refer to "The Instructions and Warning for Safety Use" enclosed in each tool box.

Fuji Industrial Technique Co.,Ltd.

2-1-14, Kamiji, Higashinari-ku, Osaka, 537-0003 Japan

Tel : 81-6-6972-2335

Fax : 81-6-6972-2380

ASSEMBLY TOOLS

ABRASIVE TOOLS

DRILLS / TAPPERS

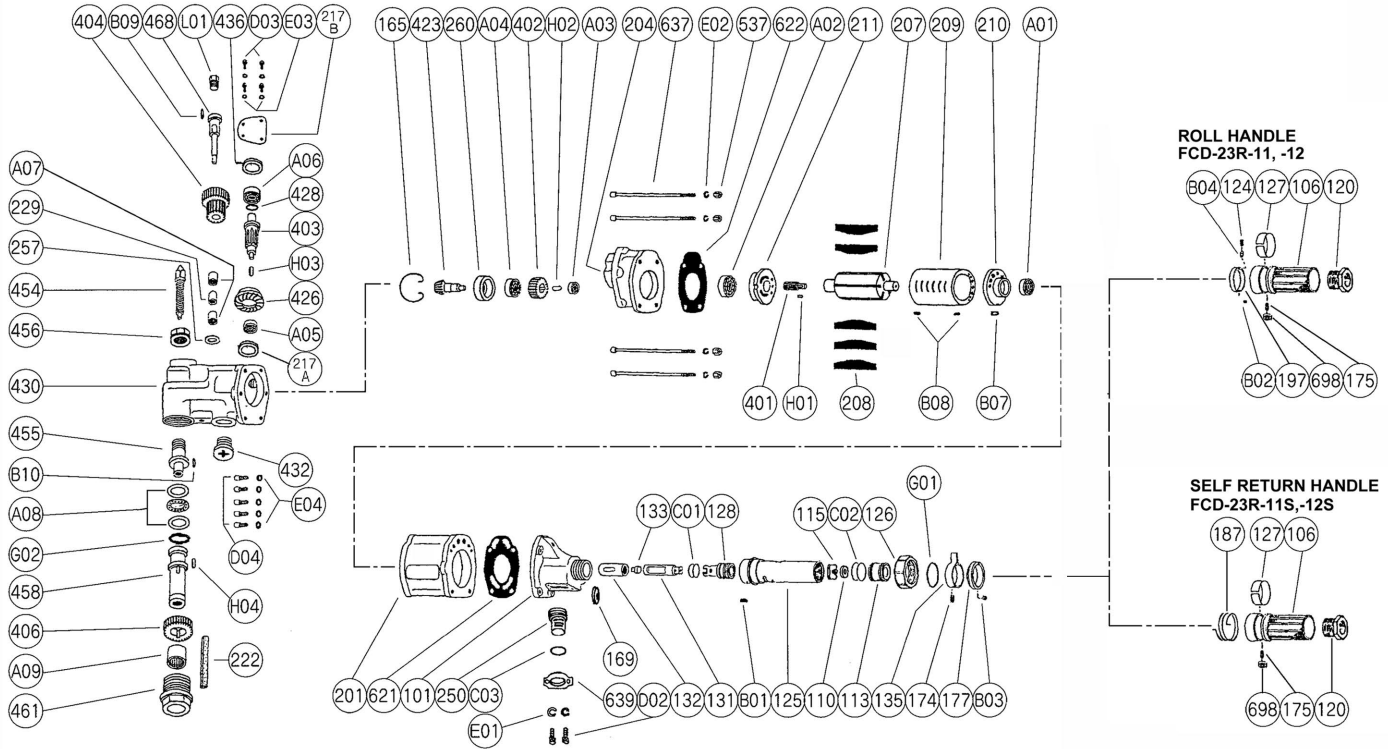
PERCUSSIVE TOOLS

AIR MOTORS

OTHER PRODUCTS

# MODELS: FCD-23R-11,-11S,-12,-12S

## EXPLODED VIEW

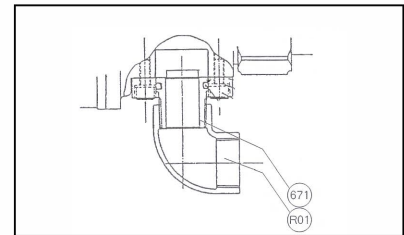


## PARTS LIST

Index No.	Parts No.	Part Name	Qty
<b>FCD-23R-11,-12</b>			
—	D-097004-02	Throttle Valve Stem Ass'y (Rc)	
—	D-097004-04	Throttle Valve Stem Ass'y (NPT)	
106	M-040106-00	Throttle Valve Handle	1
110	M-040110-00	Throttle Valve	1
113	M-040113-00	Throttle Valve Rod	1
115	M-040115-00	Throttle Valve Sheet	1
120	M-040120-00	Throttle Valve Cover (Rc)	1
	M-040120-01	Throttle Valve Cover (NPT)	1
124	G-005124-00	Knock Spring	1
125	D-026125-02	Throttle Valve Stem	1
(B01)	SP-36	Spring Pin	1
126	D-097126-00	Throttle Valve Stem Nut	1
127	M-040127-00	Throttle Valve Handle Band	1
128	D-026128-01	Reverse Valve Rod	1
135	D-026135-00	Reverse Valve Lever	1
174	D-026174-00	Small Screw	1
175	M-040175-00	Small Screw (B)	1
177	M-040177-00	Throttle Handle Step	1
197	D-097197-00	Handle Bushing	1
(B02)	SP-28	Spring Pin	1
698	D-026698-00	Guide Roller	1
B03	NR-45	Needle Roller	1
B04	NR-35FR	Needle Roller	1
C01	O-11	"O"Ring	2
C02	O-S20	"O"Ring	2
G01	SR-SA30	Snap Ring	1
<b>FCD-23R-11S,-12S</b>			
—	D-097004-03	Throttle Valve Stem Ass'y (Rc)	
—	D-097004-05	Throttle Valve Stem Ass'y (NPT)	
106	M-040106-00	Throttle Valve Handle	1
110	M-040110-00	Throttle Valve	1
113	M-040113-00	Throttle Valve Rod	1
115	M-040115-00	Throttle Valve Sheet	1
120	M-040120-00	Throttle Valve Cover (Rc)	1
	M-040120-01	Throttle Valve Cover (NPT)	1
125	D-026125-02	Throttle Valve Stem	1
(B01)	SP-36	Spring Pin	1
126	D-097126-00	Throttle Valve Stem Nut	1
127	M-040127-00	Throttle Valve Handle Band	1
128	D-026128-01	Reverse Valve Rod	1
135	D-026135-00	Reverse Valve Lever	1
174	D-026174-00	Small Screw	1
175	M-040175-00	Small Screw (B)	1
177	M-040177-00	Throttle Handle Step	1
187	M-040187-00	Throttle Valve Handle Spring	1
698	D-026698-00	Guide Roller	1
B03	NR-45	Needle Roller	1
C01	O-11	"O"Ring	2
C02	O-S20	"O"Ring	2
G01	SR-SA30	Snap Ring	1

Index No.	Parts No.	Part Name	Qty
—	D-097001-51	Housing Cover Ass'y	
101	D-097101-01	Housing Cover	1
132	D-026132-00	Reverse Valve Bushing	1
169	D-097169-00	Reverse Valve Washer	1
131	D-026131-00	Reverse Valve	1
133	D-026133-00	Reverse Valve Sheet	1
165	D-026165-00	Stop Ring	1
201	D-097201-00	Housing (FCD-23R-11)	1
	D-097201-05	Housing (FCD-23R-11S)	1
	D-097201-06	Housing (FCD-23R-12)	1
	D-097201-07	Housing (FCD-23R-12S)	1
204	D-026204-00	Housing Lower Cover	1
207	D-026207-00	Rotor	1
208	D-026208-00	Rotor Blade	5
209	D-026209-00	Cylinder	1
(B08)	SP-310	Spring Pin	2
210	D-026210-00	Cylinder Upper Plate	1
211	D-026211-00	Cylinder Lower Plate	1
217A	D-005217-00	Bearing Cover	1
217B	D-026217-00	Bearing Cover	1
222	D-026222-00	Felt Ring (FCD-23R-11,-11S)	1
	D-026222-A	Felt Ring (FCD-23R-12,-12S)	1
229	D-026229-00	Bearing Spacer	1
250	D-097250-00	Exhaust Cover	1
257	D-026257-00	Washer	1
260	D-026260-00	Bearing Case	1
401	D-026401-00	No.1 Pinion	1
402	D-026402-00	No.1 Gear	1
403	D-026403-00	No.2 Pinion	1
404	D-026404-00	No.2 Gear	1
406	D-026406-00	No.3 Gear ( for FCD-23R-11,-11S )	1
423	D-026423-00	Bevel Pinion	1
426	D-026426-00	Bevel Gear	1
428	D-026428-00	Bevel Gear Washer	1
430	D-026430-00	No.1 Gear Case	1
432	D-026432-00	Gear Case Cover	1
436	D-026436-00	Bearing Holder	1
454	D-026454-00	Feed Screw	1
455	D-026455-00	Feed Sleeve	1
456	D-026456-00	Feed Sleeve Nut	1
458	D-026458-A	Mt. Socket (FCD-23R-11,-11S)	1
	D-026458-03	Mt. Socket (FCD-23R-12,-12S)	1
461	D-026461-01	Socket Nut (FCD-23R-11,-11S)	1
	D-026461-03	Socket Nut (FCD-23R-12,-12S)	1
468	D-026468-00	No.2 Gear Spindle	1
537	W-086537-00	Hexagon Nut	4
621	D-026621-00	Packing (A)	1
622	D-026622-00	Packing (B)	1
637	D-026637-00	Half-Cut Head Bolt	4
639	D-097639-00	Exhaust Cover Holder	1

Index No.	Parts No.	Part Name	Qty
A01	BB-6202	Ball Bearing	1
A02	BB-6003	Ball Bearing	1
A03	BB-627	Ball Bearing	1
A04	BB-6001	Ball Bearing	1
A05	NB-SC66	Needle Bearing	1
A06	BB-629	Ball Bearing	1
A07	NB-SC88	Needle Bearing	2
A08	BB-51104	Thrust Bearing	1
A09	NB-SC1812	Needle Bearing (FCD-23R-11,-11S)	1
	NB-SC2016	Needle Bearing (FCD-23R-12,-12S)	1
B07	P-46	Pin	1
B09	SP-48	Spring Pin	1
B10	SP-38	Spring Pin	1
C03	O-P18	"O"Ring	1
D02	CS-518	Cap Screw	2
D03	S-410R	Screw	4
D04	CS-622	Cap Screw	5
E01	SW-5	Spring Washer	2
E02	SW-6	Spring Washer	4
E03	SW-4	Spring Washer	4
E04	SW-6	Spring Washer	5
G02	SR-S25	Snap Ring ( for FCD-23R-11,-11S )	1
H01	K-3314	Key	1
H02	K-3310	Key	1
H03	K-449.5	Key	1
H04	K-4415	Key ( for FCD-23R-11,-11S )	1
L01	PL-1/4	Plug	1
<b>OPTIONAL PARTS</b>			
<b>EXHAUST HOSE JOINT</b>			
671	D-097671-00	Exhaust Cover Joint	1
R01	JE-1/2	Elbow	1



- Specify parts number and quantity when ordering.
- The related parts are shown in a thick frame.
- #125, #197 and #209 are supplied together with parts shown in ( ).

### Standard Accessory

AC No.	Description	Qty
F-706	6mm Hex.Pin Wrench	1